



Product name

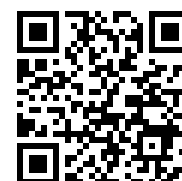
## 3-shell internal extractor

For extracting inner bearings, bearing outer rings and bushings.

Art. No. 21-89

Series 21

EAN 4021176011801



### Technical attribute

### Metric

### Imperial



Ball bearing ISO

6012; 6212; 6312;	6012; 6212; 6312;
6412; 16012; 61812;	6412; 16012; 61812;
61912; 6013; 6213;	61912; 6013; 6213;
6313; 16013; 61913;	6313; 16013; 61913;
6014; 6214; 6314;	6014; 6214; 6314;
16014; 6015; 6215;	16014; 6015; 6215;
6315; 16015; 6016;	6315; 16015; 6016;
6216; 6316; 16016;	6216; 6316; 16016;
61816; 6017; 6217;	61816; 6017; 6217;
6317; 6018; 6218;	6317; 6018; 6218;
6318; 16018; 61818;	6318; 16018; 61818;
6219; 6319; 6020;	6219; 6319; 6020;
6220; 6320	6220; 6320



Inner diameter of ball bearing

56 - 110 mm

2 1/4 - 4 3/8 inch



Effective depth

120 mm

4 3/4 inch





Length of internal extractor

187 mm

7 3/8 inch



	<b>Technisches Attribut</b>	<b>Metric</b>	<b>Imperial</b>
 Segment	Number of segments	3	3
	Weight	2.4 kg	

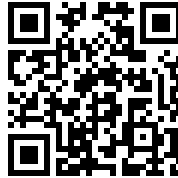


has to be accomplished with



**Slide hammer device**

22-0-2



**Counterstay**

22-4



## Spare part

<b>Art. No.</b>	<b>Product name</b>
VM112-12	female adapter
21-89-6	Spindle
021089	3 Extractor segments (set)
21-89-33	2 spreaders (pair)

## Goes with

<b>Art. No.</b>	<b>Product name</b>
22-4	Counterstay

## Part of

<b>Art. No.</b>	<b>Product name</b>
WT-030	Puller product range - automotive - axle
24-C	Set of bearing pulling and extracting tools
25-C	Set of bearing extracting tools
25-D	Set of bearing extracting tools



## Spare part of

**Art. No.**

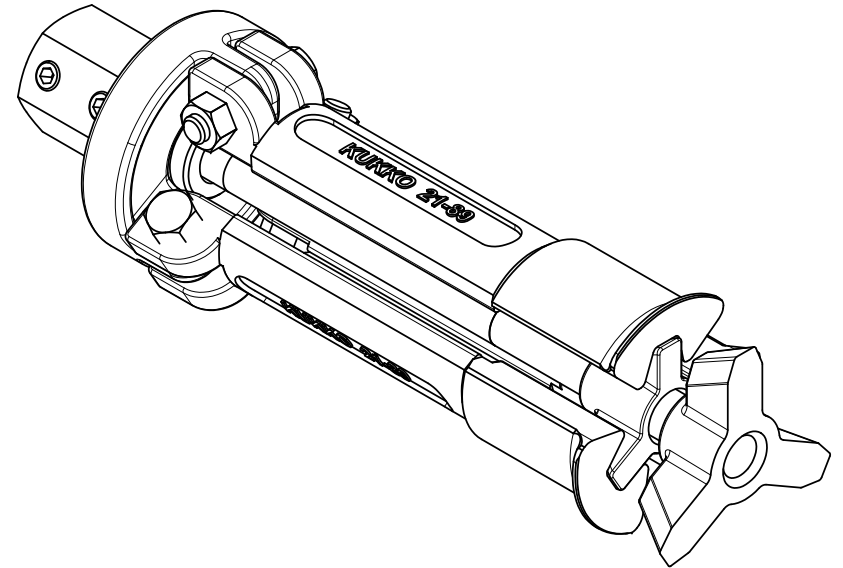
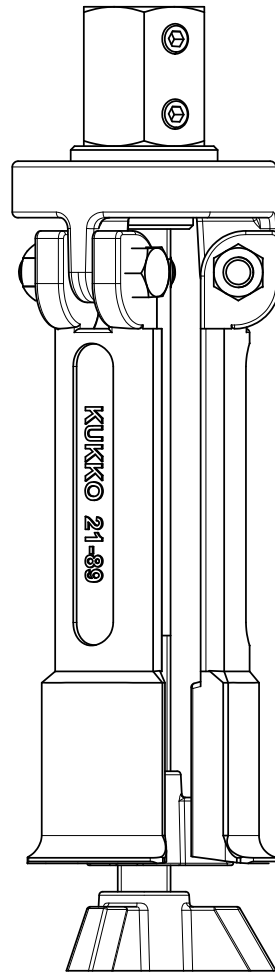
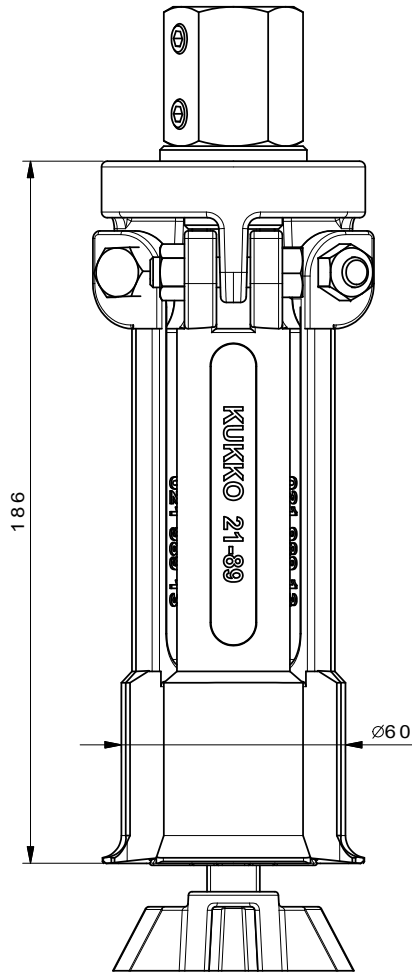
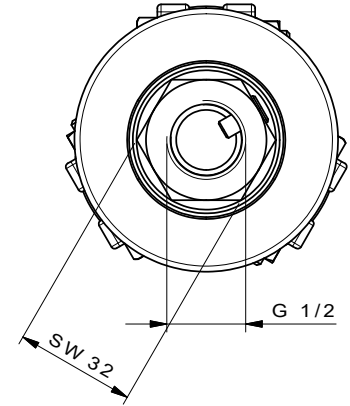
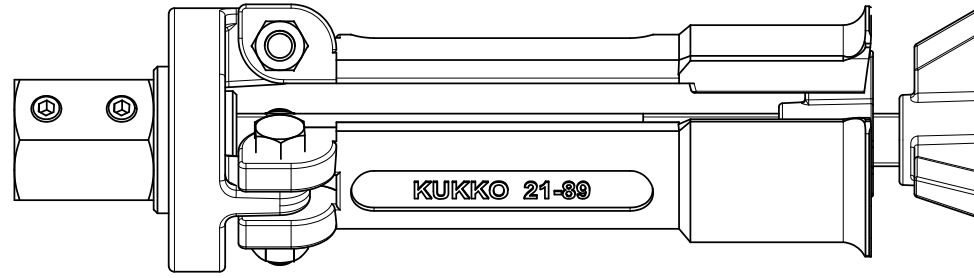
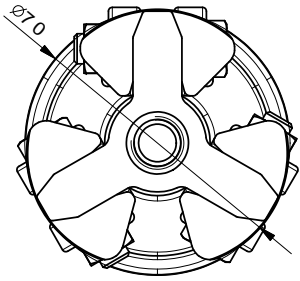
**Product name**

24-C

Set of bearing pulling and extracting tools

25-C

Set of bearing extracting tools



 <b>Kleinbongartz &amp; Kaiser oHG</b> Werkzeugfabrik Hilden - Germany	Dokumentname: 21-89 Innenauszieher	Toleranz: DIN ISO 2768-m
	Dokumentbeschreibung: ZSB	Material: Hochfester extra zarter Vergütungsstahl/ High tensile strength and toughness steel
Erstellt / Geprüft von: Schultes	Erstellungsdatum: 05/06/2015	Maßstab: 1:1
Teilbeschreibung: Innenauszieher/ 3-shell internal extractor		Wärmebehandlung / Härte: vergüteter Stahl/ tempered steel
Oberflächenbehandlung:		Oberflächenbehandlung:
Artikelnummer / ZNR.: 21-89	Dokumentversion: -	Schutzvermerk ISO 16016 beachten